

Fiber Glass Systems |

Fuel Handling Market - Red Thread™ IIA Products

EFFECTIVE: JANUARY 1, 2025

SUPERSEDES: ALL

Red Thread™ IIA Primary Piping - All pipe supplied spigot x spigot ends in 15 ft., 22 - 25 ft. or 26 - 30 ft. Random Lengths. Pipe and fittings are UL/ULC Listed under UL File MH9162.

*****ALL PRICES ARE IN U.S. DOLLARS.*****

RED THREAD IIA PRIMARY PIPE

Pipe Size/Length*	Part Number	Weight per Foot (lbs)	List Price	Lengths / Bundle
2" - 15 ft	011020-069-1	0.4	\$ 10.30	8
2" - 22-25 ft	011020-069-2	0.4	\$ 10.30	8
2" - 26-30 ft	011020-069-3	0.4	\$ 10.30	8
3" - 15 ft	011030-069-1	0.8	\$ 15.40	6
3" - 22-25 ft	011030-069-2	0.8	\$ 15.40	6
3" - 26-30 ft	011030-069-3	0.8	\$ 15.40	6
4" - 15 ft	011040-071-1	1.0	\$ 19.10	4
4" - 22-25 ft	011040-069-2	1.0	\$ 19.10	4
4" - 26-30 ft	011040-071-3	1.0	\$ 19.10	4



RED THREAD IIA PRIMARY FITTINGS

Part Number	Parts/Box	List Price
90-degree Elbow		
012020-360-4	20	\$ 84.80
012030-360-4	12	\$ 124.50
012040-360-4	6	\$ 177.90
45-degree Elbow		
012020-310-4	20	\$ 84.80
012030-310-4	15	\$ 124.50
012040-310-4	6	\$ 177.90
Tee		
012020-410-4	12	\$ 121.00
012030-410-4	6	\$ 148.20
012040-410-4	4	\$ 197.70
Sleeve Coupling		
012020-101-8	25	\$ 26.30
012030-101-8	12	\$ 38.30
012040-101-4	5	\$ 79.30



**Please note: Fittings, where applicable, must be purchased in full box quantities.*

RED THREAD IIA PRIMARY FITTINGS

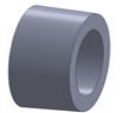
Threaded Adapter, NPT Threads

	Part Number	Parts/Box	List Price
2" BxM	012020-191-4	25	\$ 39.80
2" SxM	012020-192-4	25	\$ 39.80
2" BxF	012020-194-4	25	\$ 39.80
2" SxF	012020-195-4	25	\$ 39.80
3" BxM	012030-191-4	12	\$ 99.00
3" SxM	012030-192-4	12	\$ 99.00
3" BxF	012030-194-4	12	\$ 99.00
3" SxF	012030-195-4	12	\$ 99.00
4" BxM	012040-191-4	8	\$ 118.60
4" SxM	012040-192-4	8	\$ 118.60
4" BxF	012040-194-4	8	\$ 118.60
4" SxF	012040-195-4	8	\$ 118.60



Reducer Bushing

2" x 1" Female NPT	012020-233-4	20	\$ 57.50
2" x 1-1/4" Female NPT	012020-232-4	20	\$ 57.50
2" x 1-1/2" Female NPT	012020-231-4	20	\$ 57.50
3" x 2" Female	012030-231-4	24	\$ 61.70
4" x 3" Female	012040-231-4	9	\$ 99.00



Flange

2"	012020-170-4	6	\$ 79.30
3"	012030-170-4	6	\$ 99.00
4"	012040-170-4	6	\$ 118.60



Nipple

2" x 4"	012020-004-5	25	\$ 19.40
2" x 6"	012020-006-5	25	\$ 21.00
2" x 8"	012020-008-5	25	\$ 23.10
2" x 10"	012020-010-5	NA	\$ 25.10
2" x 12"	012020-012-5	NA	\$ 26.90
3" x 6"	012030-006-5	12	\$ 24.10
3" x 8"	012030-008-5	NA	\$ 26.30
3" x 10"	012030-010-5	NA	\$ 27.90
3" x 12"	012030-012-5	NA	\$ 32.10
4" x 6"	012040-006-4	NA	\$ 32.10
4" x 8"	012040-008-4	NA	\$ 34.10
4" x 10"	012040-010-4	NA	\$ 37.00
4" x 12"	012040-012-4	NA	\$ 39.80



Saddle

	Part Number	Parts/Box	List Price
2" x 1-1/2"	012020-516-4	1	\$ 85.70



***Please note: Fittings, where applicable, must be purchased in full box quantities.**

RED THREAD IIA PRIMARY FITTINGS

End Cap

2"	012020-180-4	NA	\$	102.20
3"	012030-180-4	NA	\$	138.30
4"	012040-180-4	NA	\$	258.00



SUMP ENTRY FITTINGS

Bonded Sump Entry Fitting Termination Style	Part Number	Parts/Box	List Price
3" Double-Wall (for 2" Primary) 5-DEGREE	012030-626-0	1	\$ 467.10
3" Double-Wall (for 2" Primary) 2.5-DEGREE	012030-626-2	1	\$ 367.20
3" Single 2.5-Degree Alignment Ring for 3" DW	012030-626-1	1	\$ 100.40
4" Double-Wall (for 3" Primary) 5-DEGREE	012040-626-0	1	\$ 592.10
4" Double-Wall (for 3" Primary) 2.5-DEGREE	012040-626-2	1	\$ 492.30
4" Single 2.5-Degree Alignment Ring for 4" DW	012040-626-1	1	\$ 100.40



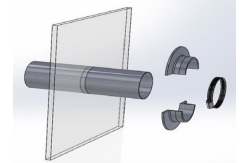
Bonded SW Sump Entry Fitting

2" Single-wall	012020-622-0	1	\$ 248.50
3" Single-wall	012030-622-0	1	\$ 276.40
4" Single-wall	012040-622-0	1	\$ 394.60
6" Single-wall	012060-622-0	1	\$ 576.50



SPLIT SUMP ENTRY FITTINGS

	Part Number	Parts/Box	List Price
2"RTIIA SSEF	012020-628-0	15	\$ 108.90
3"RTIIA SSEF	012030-628-0	9	\$ 138.30
4" RTIIA SSEF	012040-628-0	8	\$ 197.70
3/4" Conduit SSEF	012075-628-0	24	\$ 69.20
1" Conduit SSEF	012010-628-0	24	\$ 69.20



***Please note: Fittings, where applicable, must be purchased in full box quantities.**

RED THREAD II A SECONDARY CONTAINMENT PIPE

Pipe Size/Length	Part Number	Weight per Foot (lbs)	List Price	Lengths / Bundle
3" - 15 ft	011030-069-4	0.8	\$ 15.40	6
3" - 22-25 ft	011030-069-5	0.8	\$ 15.40	6
3" - 26-30 ft	011030-069-6	0.8	\$ 15.40	6
4" - 15 ft	011040-077-5	1.0	\$ 19.10	4
4" - 22-25 ft	011040-069-5	1.0	\$ 19.10	4
4" - 26-30 ft	011040-077-6	1.0	\$ 19.10	4
6" - 15 ft	011060-120-5	2.4	\$ 33.90	2
6" - 22-25 ft	011060-120-4	2.4	\$ 33.90	2
6" - 26-30 ft	011060-120-6	2.4	\$ 33.90	2

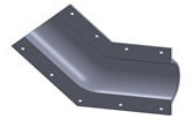


RED THREAD II A SECONDARY CONTAINMENT FITTINGS

90-degree Elbow	Part Number	Parts/Box	List Price
3"	012030-360-3	10	\$ 158.30
4"	012040-360-3	5	\$ 246.90
6"	012060-360-9	NA	\$ 690.10



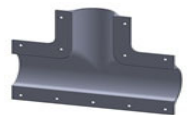
45-degree Elbow	Part Number	Parts/Box	List Price
3"	012030-310-3	10	\$ 158.30
4"	012040-310-3	5	\$ 246.90
6"	012060-310-9	NA	\$ 690.10



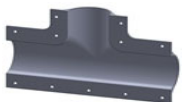
Crossover 45-degree Elbow	Part Number	Parts/Box	List Price
3"	012030-311-3	10	\$ 274.50
4"	012040-311-3	5	\$ 314.20



Tee	Part Number	Parts/Box	List Price
3"	012030-410-3	10	\$ 197.70
4"	012040-410-3	5	\$ 296.10
6"	012060-410-9	NA	\$ 788.80



Crossover Tee	Part Number	Parts/Box	List Price
3"	012030-411-3	10	\$ 353.40
4"	012040-411-3	5	\$ 393.00



Crossover Nipple	Part Number	Parts/Box	List Price
3" x 6"	012030-006-7	12	\$ 24.10
4" x 6"	012040-006-7	9	\$ 27.90
6" x 8"	012060-008-7	NA	\$ 65.60



Sleeve Coupling	Part Number	Parts/Box	List Price
3"	012030-101-3	10	\$ 158.30
4"	012040-101-3	5	\$ 227.30
6"	012060-101-9	NA	\$ 621.00



***Please note: Fittings, where applicable, must be purchased in full box quantities.**

RED THREAD II A SECONDARY CONTAINMENT FITTINGS

Sleeve Coupling One piece, scarfed O.D.

	Part Number	Parts/Box	List Price
2"	012020-101-9	NA	\$ 59.70
3"	012030-101-9	NA	\$ 65.60
4"	012040-101-9	NA	\$ 79.30



Threaded Adapter, Bell x Male, scarfed O.D.

2"	002020-191-7	NA	\$ 59.70
3"	002030-191-7	NA	\$ 79.30
4"	002040-191-7	NA	\$ 99.00



Termination Fittings

3" x 2", With Tap	012030-236-3	15	\$ 315.90
4" x 3" With Tap	012040-236-3	8	\$ 394.60
6" x 4" With Tap	012060-234-7	NA	\$ 690.30
3" x 2", Without Tap	012030-235-3	15	\$ 176.00
4" x 3", Without Tap	012040-235-3	10	\$ 256.90
6" x 4", Without Tap	012060-235-7	NA	\$ 532.70



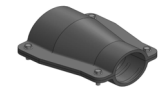
Saddles

3" x 2", Belled Outlet	012030-521-4	1	\$ 118.60
4" x 2", Belled Outlet	012040-521-4	1	\$ 138.30
4" x 3", Belled Outlet	012040-531-4	1	\$ 138.30
3" x 1", Female NPT Outlet	012030-511-4	1	\$ 118.60
3" x 1¼", Female NPT Outlet	012030-512-4	1	\$ 118.60
3" x 1½", Female NPT Outlet	012030-516-4	1	\$ 118.60
4" x 1" Female NPT Outlet	012040-511-4	1	\$ 138.30
4" x 1¼", Female NPT Outlet	012040-512-4	1	\$ 138.30
4" x 1½", Female NPT Outlet	012040-516-4	1	\$ 138.30



Concentric Reducer

4" x 3"	012040-238-3	15	\$ 148.20
5" x 4"	012050-238-3	10	\$ 197.70
6" x 4"	012060-238-3	NA	\$ 512.80



Reducer Bushing, scarfed O.D.

3" x 2"	012030-231-7	24	\$ 53.70
4" x 3"	012040-231-7	9	\$ 73.40



Centralizers

2" x 3"	013020-650-3	NA	\$ 38.10
3" x 4"	013030-651-4	NA	\$ 41.30
4" x 6"	013040-650-6	NA	\$ 46.90



***Please note: Fittings, where applicable, must be purchased in full box quantities.**

RED THREAD II A RISER PIPE

	Part Number	Lengths / Bundle	List Price	UOM
RTIIA Riser Pipe 4" PXP - 5'	012040-060-0	4	\$ 196.20	EA
RTIIA Riser Pipe 4" PXP - 20'	012040-240-0	4	\$ 633.80	EA
RTIIA Riser Pipe 4" PXP - 30'	011040-145-5	4	\$ 32.30	FT



RED THREAD II A RISER PIPE ADAPTERS

RTIIA Riser Pipe Adapt 4" BXMN **** RTIIA Riser Kit	012040-191-9	8	\$ 166.60	EA
includes 1) 5' pipe 2) adapters & adhesive kit	012040-064-9	1	Call for Pricing	EA



RED THREAD II A ADHESIVE KITS

Description	Part Number	Packaging	List Price
PSX™•20 Kit - 6 oz.	60210101	10/Box	\$ 56.00
PSX™•20 Kit - 6 oz. International	60210101	10/Box	\$ 68.50
Filler for PSX™ 20 Kit	002990-033-0	50/Box	\$ 11.00



RED THREAD II A TOOLS & ACCESSORIES

Heat Packs	Part Number	Packaging	List Price
2"	005990-400-1	30/Case	\$ 13.00
3"	005990-401-1	30/Case	\$ 15.90
4"	005990-402-1	20/Case	\$ 24.10
6"	005990-403-1	20/Case	\$ 33.20



Electric Heating Blankets, 115V

1-2" HEAT COLLAR 115V	005990-520-0	NA	\$ 273.40
2-3" HEAT COLLAR 115V	005990-521-0	NA	\$ 338.80
3-4" HEAT COLLAR 115V	005990-522-0	NA	\$ 386.10
6-8" HEAT COLLAR 115V	005990-523-0	NA	\$ 546.70



Electric Heating Blankets, 230V

1-2" HEAT COLLAR 230V	005990-520-1	NA	TBD
2-3" HEAT COLLAR 230V	005990-521-1	NA	TBD
3-4" HEAT COLLAR 230V	005990-522-1	NA	TBD
6-8" HEAT COLLAR 230V	005990-523-1	NA	TBD



***Please note: Fittings, where applicable, must be purchased in full box quantities.**

RED THREAD II A TOOLS & ACCESSORIES

POWER TOOLS

	Part Number	Size	List Price
Model 2100 Tool ¹ , 110V	005990-795-0	NA	\$ 3,487.60
Model 2100-I, 220/240V, 50 Hz	005990-797-0	NA	\$ 4,073.40
2" Dualoy Mandrel for 2100 Tool	005990-822-12	2"	\$ 401.80
3" Dualoy Mandrel for 2100 Tool	005990-823-12	3"	\$ 439.70
4" Dualoy Mandrel for 2100 Tool	005990-824-12	4"	\$ 488.40
Model 2102 ² , 110V	005990-790-0	NA	\$ 4,062.20
Model 2102-I, 220/240V, 50 Hz	005990-780-0	NA	\$ 4,254.50
2" - 4" Tapering Tool Kit ³	005990-800-0	NA	\$ 1,401.70



ACCESSORIES FOR TAPERING TOOL KITS

Cutting Head Kit	005990-810-0	NA	\$ 677.30
Power Adapter	005990-813-0	NA	\$ 134.90
Adapter Block for 1" & 1-1/2"	005990-812-0	NA	\$ 156.30
Adapter Kit for 1" & 1-1/2"	005990-811-0	NA	\$ 531.80
Scarfig Adapter Kit ⁴ for 3" - 4"	005990-915-0	NA	\$ 228.60
Scarfig Adapter Kit ⁴ for 6"	005990-922-1	NA	\$ 293.10
1" Mandrel	005990-820-0	1"	\$ 156.30
1-1/2" Mandrel	005990-821-0	1-1/2"	\$ 156.30
2" Mandrels	005990-822-0	2"	\$ 313.80
3" Mandrels	005990-823-0	3"	\$ 392.40
4" Mandrels	005990-824-0	4"	\$ 471.20
6" Mandrels	005990-825-0	6"	\$ 549.80
Blade, 1" - 6" Tool	005990-814-0	NA	\$ 82.40
Blade-Secondary Containment	005990-916-0	NA	\$ 142.10
Blade Holder for Sec. Cont.	005990-917-0	NA	\$ 145.40

Notes:

1) 2100 Tool Tapers 2" and 3" and scarfs 3" and 4". For additional mandrels to taper and scarf Dualoy® 3000/L and /LCX, please contact Customer

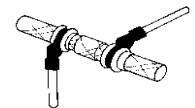
2) Tapers 2", 3", and 4" and scarfs 3".

3) Includes tool body, mandrels for each size, handles, blade w/ holder, 9/16" x 1/2" box end wrench, rubber mallet, and case. Power Drive and Power Adapter are sold separately. The tool uses Rigid® 700 or equivalent power drive with

4) Includes special blade, blade holder and 6" gauge

Threaded and Bonded (TAB) Joint Wrench - Set of Two is Recommended

2" Wrench	005990-712-0	NA	\$ 436.70
3" Wrench	005990-713-0	NA	\$ 453.50
4" Wrench	005990-714-0	NA	\$ 554.70
6" Wrench	005990-716-0	NA	\$ 773.50



Secondary Containment Gauge Nipples

3"	012030-050-0	NA	\$ 19.90
4"	012040-050-0	NA	\$ 23.70
6"	012060-120-0	NA	\$ 58.40

